

COMPACT SENSOR

3D MASTER RED

- XYZ direction measurement possible with a single tool.
- Can also measure non-conductive workpieces.
- Compact design that prevents interference with workpieces.
- Calculation of the stylus ball radius not required.



For all
workpieces
and machine
tools

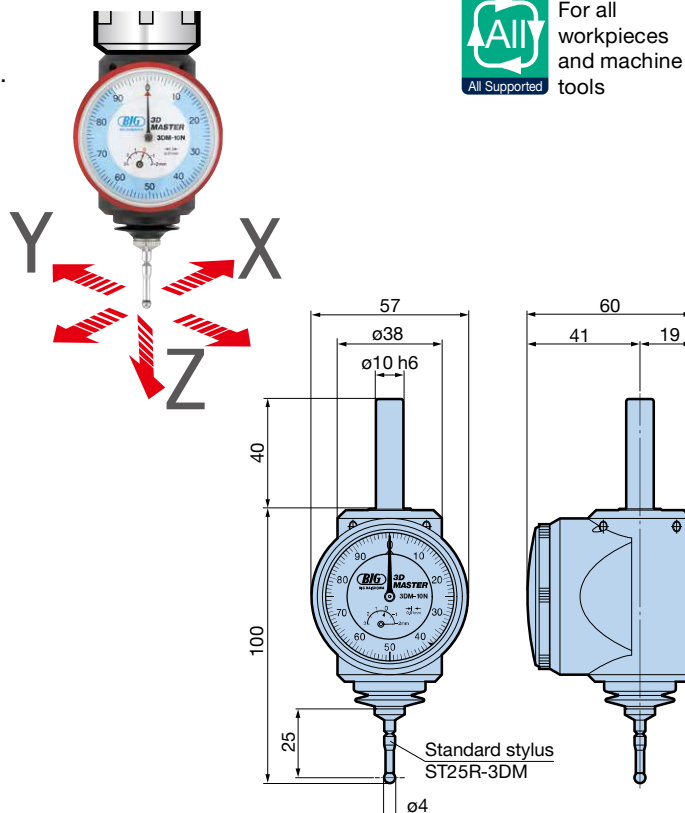


Model	3DM-10N
-------	----------------

Main Specifications

Min. scale	0.01mm
Repeatability	Within 0.01mm
XY Stroke	±4mm
Z Stroke	4mm
Weight	0.6kg
Accessory	Stylus: ST25R-3DM

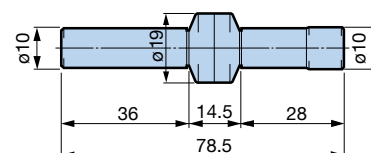
The specifications above are values when the accessory ST25R-3DM stylus is used.



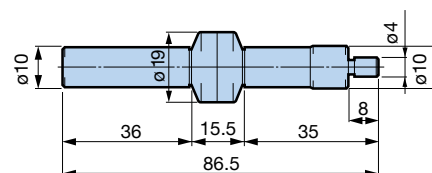
ACCU CENTER

- Simple mechanical design for high-precision positioning!
- Just touch the stylus to the workpiece surface to complete measurement.
- Repeatability within $3\mu\text{m}$ (when used on vertical machines).
- Hard chrome plated stylus for superior durability.

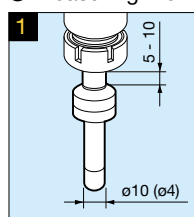
Model	ACCU-C10
-------	-----------------



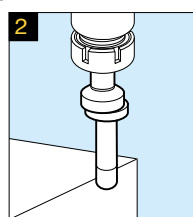
Model	ACCU-C104
-------	------------------



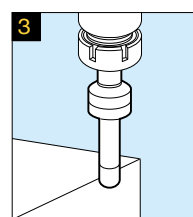
Measuring Method



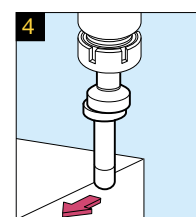
Mount the $\phi 10$ straight part to a Milling Chuck or New Baby Chuck.



Press the stylus lightly with fingers to move off center and rotate at 400 - 600min⁻¹.



From the 2 position, touch the stylus to the workpiece; its runout will gradually decrease and it will seem to come to a stop.



From the 3 position, apply finer feed and keep the stylus in contact; it will begin to slide in one direction. Where it begins to slide, compensate the position by radius of the stylus 5mm(2mm) to detect the reference position.



Not suitable for horizontal type machines.