

Calipers

Hook Type Vernier Caliper SERIES 536

- Allows measurement of stepped inside diameter section of cylinders.
- **536-172** is equipped with a fine-adjustment wheel to enable precise feed and adjustment.

Inside-groove type



536-172

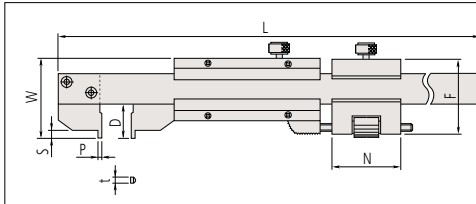
SPECIFICATIONS

Metric					
Order No.	Range (mm)*1	Graduation (mm)	Maximum permissible error (mm)*2		Remarks
			<i>E</i> MP _E	<i>S</i> MP _E	
536-171	0 - 200 (10.1 - 200)	0.02	±0.03	±0.03	—
536-172	0 - 200 (2.1 - 200)		±0.03	±0.03	with fine adjustment

*1 (): Dimension in inside measurement

*2 Partial Surface Contact Error, *E*MP_E and Shift Error, *S*MP_E are terms (notations) used in ISO 13385-1:2019.

DIMENSIONS



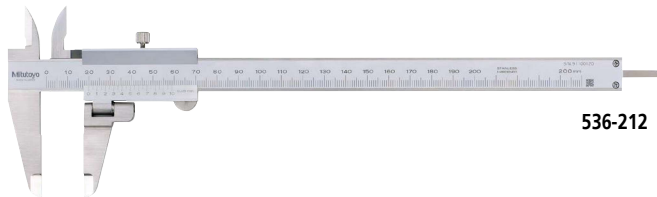
Unit: mm

Order No.	D	F	L	N	P	S	t	W
536-171*1	12	—	320	—	5	4	3.5	28
536-172*2	12	28.5	320	20	1	—	—	—

*1 Inside measuring face is R5.
*2 Inside measuring face is flat.

Swivel Vernier Caliper SERIES 536 — Moving Jaw type

- The moving jaw can be rotated to measure sectioned shafts.
- Allows step measurement.



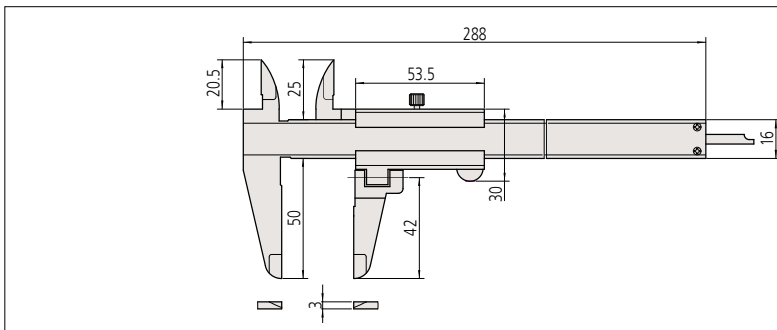
536-212

SPECIFICATIONS

Metric					
Order No.	Range (mm)	Graduation (mm)	Maximum permissible error (mm)*		Remarks
			<i>E</i> MP _E	<i>S</i> MP _E	
536-212	0 - 200	0.05	±0.05	±0.07	with depth bar

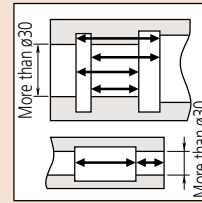
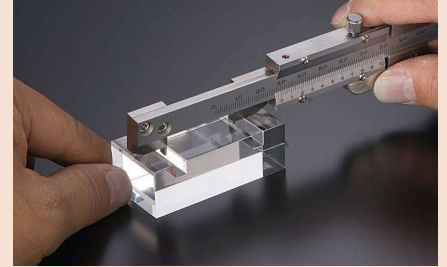
* Partial Surface Contact Error, *E*MP_E and Shift Error, *S*MP_E are terms (notations) used in ISO 13385-1:2019.

DIMENSIONS



Unit: mm

Measurement example



Measurement example

