

QV APEX Pro/QV HYPER Pro CNC Vision Measuring System

- Equipped with a strobe light and the newly developed StrobeSnap function, **QUICK VISION Pro** models deliver high-speed, high-accuracy measurements.
- The STREAM function is an optional upgrade to improve productivity by up to five times.



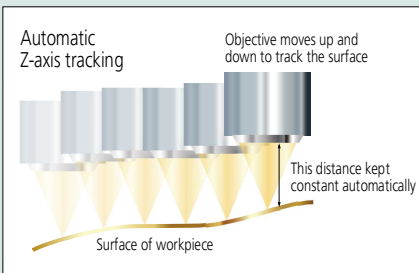
QV APEX 404 Pro



QV HYPER 302 Pro

Tracking Auto Focus (TAF)

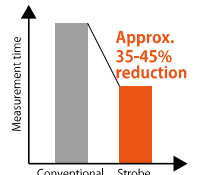
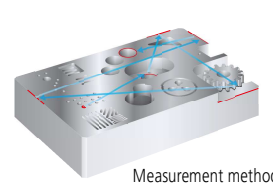
Laser emitted from the objective lens enables automatic focusing. The system automatically keeps the object in focus according to its shape, eliminating the task of focus adjustment and increasing measurement throughput.



Laser source	Semiconductor laser (peak wavelength: 690 nm)
Laser safety	Class 2 (JIS C6802: 2014, EN/IEC 60825-1: 2014)
Auto focus system	Objective co-axial autofocusing (knife-edge method)

StrobeSnap

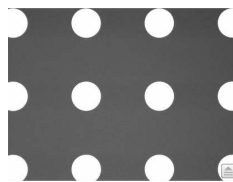
All the **QUICK VISION Pro** models are equipped with a strobe light, and the newly developed vision measuring function "StrobeSnap" delivers vision measurements with both high throughput and high accuracy. Regardless of the continuity of measuring positions, measuring time can be shortened by about 35 to 45% for most measurement samples.



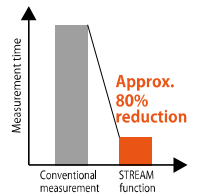
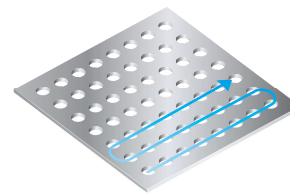
Note: Comparison with old specifications using our demo sample

STREAM function (optional)

The STREAM function provides an amazingly high throughput, due to the non-stop measurement where the camera motion and the strobe light are synchronized. It can shorten measuring time more than StrobeSnap on account of continuous element measurement as shown in the following conceptual image of measurement.



XY=0.2 mm pitch, 626
Measured with a field of view of 0.62x0.47 mm
STREAM measurement 36 sec.



Note: Comparison with old specifications using our demo sample

SPECIFICATIONS

QV APEX Pro

Items	Model No.	QV APEX 302 Pro	QV APEX 404 Pro	QV APEX 606 Pro
Measuring range (XxYxZ)		300x200x200 mm	400x400x250 mm	600x650x250 mm
Observation unit		Programmable power turret 1X-2X-6X		
Imaging device		B&W CMOS		
Vision measuring accuracy*	EUX/EUY, MPE	(1.5 + 3L/1000) μm		
	EUXY, MPE	(2.0 + 4L/1000) μm		
	EUZ, MPE	(1.5 + 4L/1000) μm		

QV HYPER Pro (Specifications other than as quoted in the table are the same as the **QV APEX Pro** specifications.)

Items	Model No.	QV HYPER 302 Pro	QV HYPER 404 Pro	QV HYPER 606 Pro
Imaging device		B&W CMOS		
Vision measuring accuracy*	EUX/EUY, MPE	(0.8 + 2L/1000) μm		
	EUXY, MPE	(1.4 + 3L/1000) μm		
	EUZ, MPE	(1.5 + 2L/1000) μm		

* L=length between two arbitrary points (mm)



Refer to the **QUICK VISION Series Brochure (E14028)** for more details.