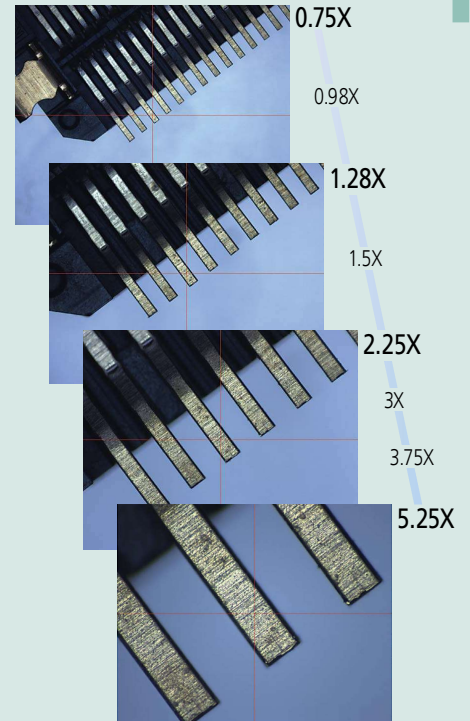


## QV Active CNC Vision Measuring System

- Cost effective, multifunction, CNC Vision Measuring System.
- Usability has been improved by adopting a color camera and 8-step zoom optics.
- The zoom ratio of 7X (14X at maximum by changing the fixed-magnification objective lens) enables a wide range of inspection from

wide view measurement at low magnification to micro-measurement at high magnification.

- The 74 mm maximum working distance (1X optional objective) promotes safe working by reducing the risk of collision, and allows greater freedom in fixture design.



### From wide view measurement to micro-measurement

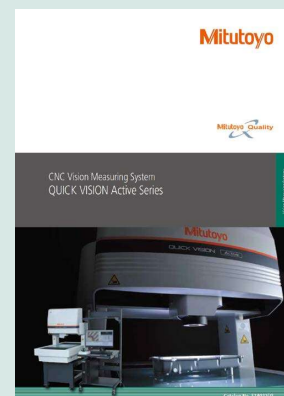
| Optical magnification                | 0.5X  | 0.65X | 0.75X | 0.85X | 0.98X | 1X    | 1.28X | 1.3X  | 1.5X  | 1.7X  | 2X    | 2.25X | 2.5X  | 3X    | 3.5X  | 3.75X | 4X     | 5X     | 5.25X  | 7X     |      |      |
|--------------------------------------|---|-------|-------|-------|-------|-------|-------|-------|-------|-------|-------|-------|-------|-------|-------|-------|--------|--------|--------|--------|------|------|
| View field (mm)                      | Horizontal (H)  |       | 13.60 | 10.46 | 9.07  | 8.00  | 6.94  | 6.80  | 5.31  | 5.23  | 4.53  | 4.00  | 3.40  | 3.02  | 2.72  | 2.27  | 1.94   | 1.81   | 1.70   | 1.36   | 1.30 | 0.97 |
|                                      | Vertical (V)  |       | 10.80 | 8.31  | 7.20  | 6.35  | 5.51  | 5.40  | 4.22  | 4.15  | 3.60  | 3.18  | 2.70  | 2.40  | 2.16  | 1.80  | 1.54   | 1.44   | 1.35   | 1.08   | 1.03 | 0.77 |
| Total magnification (on the monitor) | 13.20   | 17.10 | 19.80 | 22.40 | 25.80 | 26.40 | 33.70 | 34.30 | 39.50 | 44.80 | 52.70 | 59.30 | 65.90 | 79.10 | 92.30 | 98.90 | 105.50 | 131.80 | 138.40 | 184.50 |      |      |
| Objective lens                       | 1X objective (optional) Working distance: 74 mm             |       |       |       |       |       |       |       |       |       |       |       |       |       |       |       |        |        |        |        |      |      |
|                                      | 1.5X objective (standard accessory) Working distance: 42 mm |       |       |       |       |       |       |       |       |       |       |       |       |       |       |       |        |        |        |        |      |      |
|                                      | 2X objective (optional) Working distance: 42 mm             |       |       |       |       |       |       |       |       |       |       |       |       |       |       |       |        |        |        |        |      |      |

Note: The total magnification indicates the magnification on the monitor when the size of the **QVPAK** video window is 178.8x143.0 mm (default).

### SPECIFICATIONS

| Model No.                       | QV Active 202   | QV Active 404   |
|---------------------------------|---|---|
| Type                            | Standard model  | Standard model  |
| Measuring range (XxYxZ)         | 250x200x150 mm<br>(250x200x118 mm: when 1X objective is used) | 400x400x200 mm<br>(400x400x168 mm: when 1X objective is used) |
| Observation unit                | Zoom unit (8 positions)                                       |   |
| Imaging device                  | Color CMOS camera   |   |
| Vision measuring accuracy*      | E <sub>ix</sub> , E <sub>iy</sub>                             | (2 + 3L/1000) μm  |
|                                 | E <sub>iz</sub>   | (3 + 5L/1000) μm  |
|                                 | E <sub>z</sub>  | (2.5 + 4L/1000) μm  |
|                                 | Accuracy guaranteed with optics specified                     | Objective: 1.5X, Optical magnification: 5.25X                 |
| Accuracy guaranteed temperature | 20±1 °C   | 20±1 °C   |

\* Inspected to a Mitutoyo standard. L=length between two arbitrary points (mm)



Refer to the **QUICK VISION Active Series Brochure (E14022)** for more details.