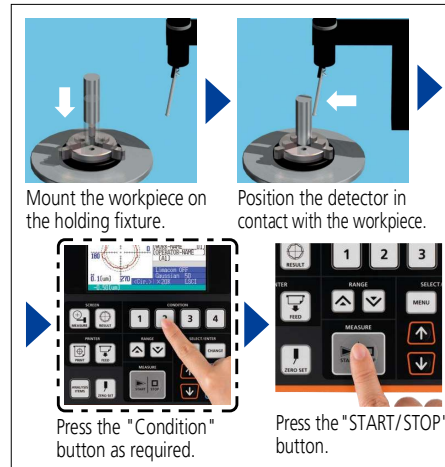


Roundtest RA-10 SERIES 211 — Roundness Measuring Instrument



RA-10

Simple measurement procedure



SPECIFICATIONS

Model No.		RA-10	
Turntable	Rotational accuracy (JIS B 7451-1997)	Radial direction	(0.04 + 6H/10000) μm H: Probing height (mm)
		Axial direction	(0.04 + 6X/10000) μm X: distance from the center of rotation (mm)
	Maximum probing diameter	ø100 mm	
	Maximum loading mass	10 kg	
Vertical movement	Vertical travel	117 mm	
X axis	Travel range	75 mm (-25 mm to 50 mm from the rotation center)	
Detector*	Measuring range	±1000 μm	

* Only the standard length stylus is applicable to this detector. The long type cannot be used.

Roundtest RA-120/120P SERIES 211 — Roundness Measuring Instruments



RA-120



RA-120P

The analysis capabilities for the various models (RA-120/120P/10) vary. For details, refer to page L-26.

SPECIFICATIONS

Model No.		RA-120		RA-120P	
Turntable	Rotational accuracy (JIS B 7451-1997)	Radial direction	(0.04 + 6H/10000) μm H: Probing height (mm)		
		Axial direction	(0.04 + 6X/10000) μm X: distance from the center of rotation (mm)		
	Maximum probing diameter*1	ø280 mm (ø380 mm: for the vertical position when detector holder is installed reversely, the maximum probing height is up to 50 mm from the table top.)			
	Maximum loading mass	25 kg			
Vertical movement	Vertical travel	280 mm			
X axis	Travel range	165 mm (-25 mm to 140 mm from the rotation center)			
Detector*2	Measuring range	±1000 μm			

*1 Auxiliary stage for a low-height workpiece (optional) is required for the measurement 20 mm or less in the radial direction from the center point of the table and 20 mm or less from the table top.

*2 Only the standard length stylus is applicable to this detector. The long type cannot be used.

A cost-effective compact instrument that enables full-scale roundness evaluation.

- Offers easy operation for anyone. A large, simple key arrangement is used.
- User-friendly operation. Measurement results and recorded profiles are easy to view with the large LCD, and can then be printed by the built-in thermal line printer. Furthermore, optional functions to improve usability can be offered.

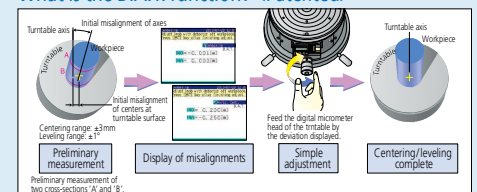


Refer to the Roundtest RA-10 Brochure (E15019) for more details.

Easy operation, compact and outstanding cost/performance ratio, designed for use on the shop-floor right beside the production line.

- D.A.T. (Digimatic Adjustment Table) function aids adjustments such as centering and leveling, and substantially reduces the time required for preliminary setup operations.

What is the D.A.T. function? <Patented>



Dedicated analysis unit type (RA-120)

Data analysis by PC (RA-120P)

- Compact, lightweight design from incorporating electronic components inside the main unit.
- ROUNDPAK, a data analysis program employs Windows OS and archived higher level of analysis.



Refer to the Roundtest RA-120/120P Brochure (E15008) for more details.