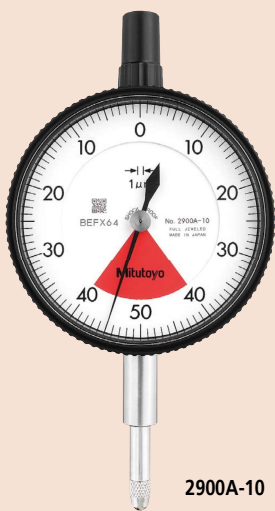


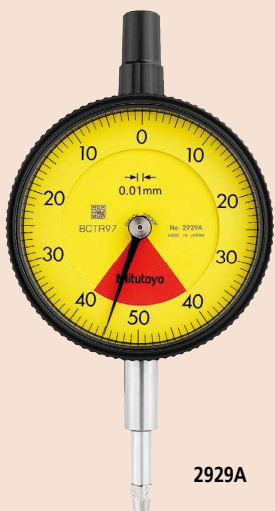


SERIES 2 — Standard One Revolution Type for Error-free Reading

- This series has been developed to eliminate the possibility of reading errors due to miscounting multiple revolutions.
- Mitutoyo's unique shock-proof mechanism is incorporated, providing improved resistance to shock due to sudden spindle retraction caused by impact.
- The bezel clamp and lifting lever (optional) can be attached to either the right or left side. These parts can be easily installed and removed without tools.
- The stem and spindle are made of high-strength quench-hardened stainless steel suitable for heavy-duty use.
- A carbide contact point is used.
- Application of an anti-reflective and hard surface coating improves scale visibility along with scratch and chemical resistance.
- The dead zone in red indicates "accuracy not guaranteed".

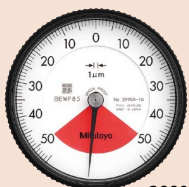


2900A-10

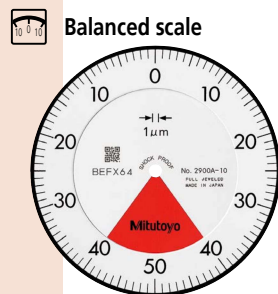


2929A

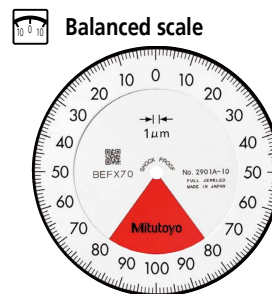
One revolution type Back Plunger dial gages are also available. (Refer to pages F-55 to F-56 for details.)



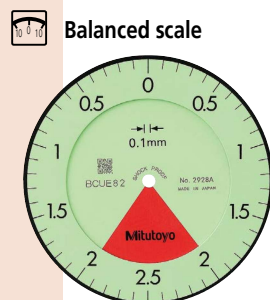
2990A-10



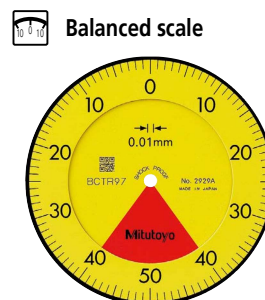
- 2900A-10**
Graduation: 0.001 mm, Measuring range: 0.08 mm
- One revolution
 - Shockproof
 - Jeweled bearing
- 2900A-72**
One revolution
- Shockproof
- Dustproof
- Jeweled bearing



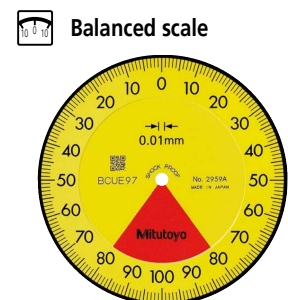
- 2901A-10**
Graduation: 0.001 mm, Measuring range: 0.16 mm
- One revolution
 - Shockproof
 - Jeweled bearing



- 2928A**
Graduation: 0.1 mm, Measuring range: 4 mm
- One revolution
 - Shockproof



- 2929A**
Graduation: 0.01 mm, Measuring range: 0.8 mm
- One revolution
 - Shockproof
- 2929A-62**
One revolution
- Shockproof
- Dustproof

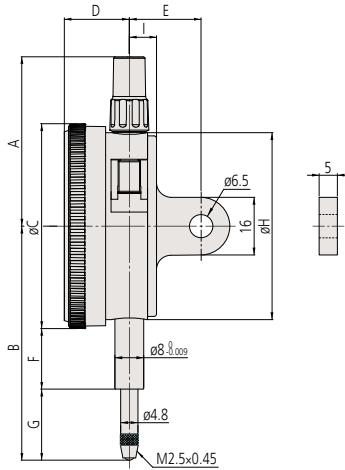


- 2959A**
Graduation: 0.01 mm, Measuring range: 1.6 mm
- One revolution
 - Shockproof

Dial Indicators

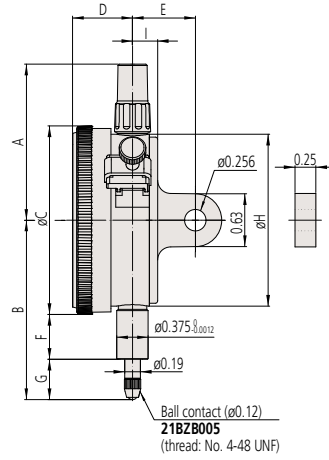
DIMENSIONS

ISO/JIS Type



Unit: mm

ANSI/AGD Type



Unit: in

Order No.	A	B	C	D	E	F	G	H	I	Mass (g)	
										w/lug	Flat-back
2928A	47.2	65.2	57	18.1	20	16.9	19.8	52	7.6	145	136
2929A	47.2	65.2	57	18.1	20	16.9	19.8	52	7.6	145	136
2929A-62	47.2	65.2	57	18.1	20	16.9	19.8	52	7.6	145	136
2959A	47.2	65.2	57	18.1	20	16.9	19.8	52	7.6	145	136
2900A-10	47.2	66	57	18.1	20	16.9	20.6	52	7.6	149	140
2900A-72	47.2	66	57	18.1	20	16.9	20.6	52	7.6	149	140
2901A-10	47.2	66.1	57	18.1	20	16.9	20.7	52	7.6	149	140

Order No.	A	B	C	D	E	F	G	H	I	Mass (g)	
										w/lug	Flat-back
2909A-62	1.86	2.04	2.24	0.71	3/4	0.54	0.39	2.05	0.30	163	138
2910A-10	1.86	2.02	2.24	0.71	3/4	0.54	0.36	2.05	0.30	164	139

Note: Refer to pages F-57 to F-60 for details of contact points.

FEATURES

Metric		1/10 Rev	1/2 Rev	1 Rev	63	IP65	Diamond
Order No.	w/lug Flat-back						
2928A 2928AB	✓	✓	✓				
2929A 2929AB	✓	✓	✓				
2929A-62 2929AB-62	✓	✓	✓			✓	
2959A 2959AB	✓	✓	✓				
2900A-10 2900AB-10	✓	✓	✓				✓
2900A-72 2900AB-72	✓	✓	✓			✓	✓
2901A-10 2901AB-10	✓	✓	✓				✓

Inch		1/10 Rev	1/2 Rev	1 Rev	63	IP65	Diamond
Order No.	w/lug Flat-back						
2909A-62 2909AB-62	✓	✓	✓				✓
2910A-10 2910AB-10	✓	✓	✓				✓

SPECIFICATIONS

Metric		Graduation (mm)	Range (range/rev) (mm)	Maximum permissible error (MPE) (μm)				Dial reading	Measuring force (N)		
w/lug	Flat-back			Indication error							
				1/10 Rev	1/2 Rev	1 Rev	Measuring range				
2928A	2928AB	0.1	4 (5)	20	—	—	40	20	20	2-0-2	1.4 or less
2929A	2929AB	0.01	0.8 (1)	5	—	—	8	3	3	40-0-40	1.4 or less
2929A-62	2929AB-62	0.01	0.8 (1)	5	—	—	8	3	3	40-0-40	2.0 or less
2959A	2959AB	0.01	1.6 (2)	5	—	—	10	3	3	80-0-80	1.4 or less
2900A-10	2900AB-10	0.001	0.08 (0.1)	2	—	—	3	2	0.5	40-0-40	1.5 or less
2900A-72	2900AB-72	0.001	0.08 (0.1)	2	—	—	3	2	0.5	40-0-40	2.0 or less
2901A-10	2901AB-10	0.001	0.16 (0.2)	2	—	—	4	2	0.5	80-0-80	1.5 or less

Note: Completed products inspection is performed in the vertical orientation (contact point downward) and the stated accuracy is guaranteed.

Inch		Graduation (in)	Range (range/rev) (in)	Accuracy (in)			Repeat-ability (in)	Dial reading	Measuring force (N)
w/lug	Flat-back			First 1 Rev/2.5 Rev/10 Rev					
				Retrace					
2909A-62	2909AB-62	0.0005	0.04/0.05	±0.0005/—/—	0.00016	±0.0001	20-0-20	2.5 or less	
2910A-10	2910AB-10	0.0001	0.008/0.01	±0.0001/—/—	0.0001	±0.00003	4-0-4	1.8 or less	

Note: Completed products inspection is performed in the vertical orientation (contact point downward) and the stated accuracy is guaranteed.

Optional Accessories

- Limit hand (2 pcs.): **21AZB195**



- Bezel clamp: **21AZB148** (for metric type)
21RZA065 (for inch type)



21AZB148