



Dust- and Water- Protected
www.tuv.com
ID 0000040191

Applicable models: series 395

Measurement example



Type A (pin)

Type B (spherical)



Type C (cylindrical)

Type D (cylindrical)



Optional Accessories

Order No.	Type	Description
05CZA662	B	Connecting cable for series 395 (1 m)
05CZA663	B	Connecting cable for series 395 (2 m)
06AFM380B	B	USB Input Tool Direct (2 m)
02AZD790B	B	Connecting cables for U-WAVE-T (160 mm)
02AZE140B	B	Connecting cables for U-WAVE-T For foot switch
264-622	IP67	U-WAVE-TM
264-623	Buzzer	U-WAVE-TM
264-626	IP67	U-WAVE-TMB
264-627	Buzzer	U-WAVE-TMB
02AZF310	IP67 / buzzer	Connecting unit for U-WAVE-TM/TMB

Anvil shape

Unit: mm

D: Minimum measurable inside diameter
L: Distance to spindle center

Anvil	øD	L
Type A	ø2.0	4
Type B	ø3.6	4
Type C	ø4.8	12
Type D	ø8.2	22

Tube Micrometers
SERIES 395, 115, 295 — Spherical and Cylindrical Anvil Type

- Spindle face: Carbide.
- **Series 395:** IP65 digimatic model.
- Equipped with Ratchet Stop for constant measuring force.



395-261-30

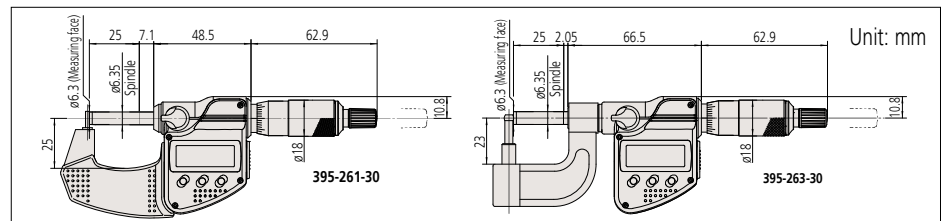
SPECIFICATIONS

Metric				
Order No.	Range (mm)	Resolution (mm)	Maximum permissible error J_{MPE} (µm)	Remarks
Digimatic (LCD)				
395-261-30	0 - 25	0.001	±3	Type A
395-262-30				Type B
395-263-30				Type C
395-264-30				Type D

Inch / Metric				
Order No.	Range (in)	Resolution	Maximum permissible error J_{MPE} (in)	Remarks
Digimatic (LCD)				
395-362-30	0 - 1	0.00005 in/ 0.001 mm	±0.00015	Type B
395-363-30				Type C
395-364-30				Type D

- Battery: SR44 (1 pc.), **938882**, for initial operational checks (standard accessory)
 - Battery life: Approx. 2.4 years under normal use
 - Length standard: Electromagnetic rotary sensor
 - Standard accessories: Spanner (**301336**), 1 pc.
- Note: For functional details, refer to page B-7.
Optional connecting cable is available only for water-proof type (Digimatic model).

DIMENSIONS



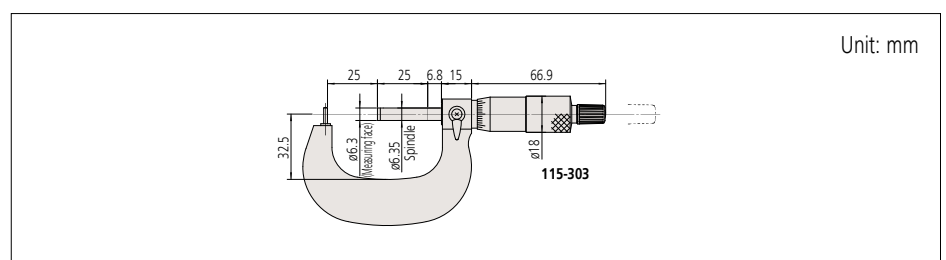
SPECIFICATIONS

Metric				
Order No.	Range (mm)	Graduation (mm)	Maximum permissible error J_{MPE} (µm)	Remarks
Analog				
115-302	0 - 25	0.01	±3	Type A
115-308				Type B
115-303				Type A
115-309	25 - 50	0.01	±3	Type B
115-315				Type C
115-316	0 - 25	0.01	±3	Type D

Inch				
Order No.	Range (in)	Graduation (in)	Maximum permissible error J_{MPE} (in)	Remarks
Analog				
115-305	0 - 1	0.001	±0.00015	Type A
115-313				Type C
115-314		0.0001		Type D

- Standard accessories: Setting standard, 1 pc. (except for measuring range 0 to 25 mm (0 to 1 in) models)
- Spanner (**301336**), 1 pc.

DIMENSIONS



Micrometer

Tube Micrometers SERIES 395, 115, 295 — Spherical Anvil and Spindle Type

- Measuring faces: Carbide. (115-201: only the spindle is carbide tipped.)
- Equipped with Ratchet Stop for constant measuring force.
- series 395: IP65 digimatic model.



395-271-30

SPECIFICATIONS

Metric					Inch / Metric				
Order No.	Range (mm)	Resolution (mm)	Maximum permissible error J_{MPE} (μm)	ϕD (mm)	Order No.	Range (in)	Resolution	Maximum permissible error J_{MPE} (in)	ϕD (in)
Digimatic (LCD)					Digimatic (LCD)				
395-271-30	0 - 25	0.001	± 2	$\phi 15$	395-371-30	0 - 1	0.00005 in/ 0.001 mm	± 0.0001	$\phi 0.59$
395-272-30	25 - 50				395-372-30	1 - 2			
395-273-30	50 - 75			395-373-30	2 - 3	$\phi 0.75$			
395-274-30	75 - 100			± 3	$\phi 20$	395-374-30			3 - 4

- Battery: SR44 (1 pc.), 938882, for initial operational checks (standard accessory)
 - Battery life: Approx. 2.4 years under normal use
 - Length standard: Electromagnetic rotary sensor
 - Standard accessories: Setting standard, 1 pc. (except for measuring range 0 to 25 mm (0 to 1 in) models), Spanner (301336), 1 pc.
- Note: For functional details, refer to page B-7.
Optional connecting cable is available only for water-proof type (Digimatic model).



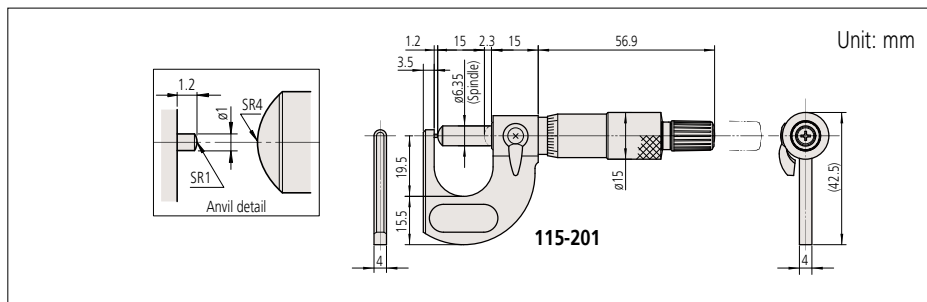
115-215

SPECIFICATIONS

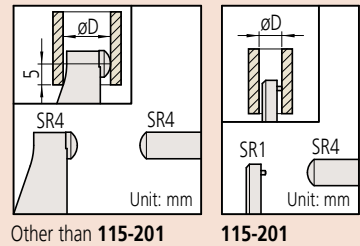
Metric					Inch				
Order No.	Range (mm)	Graduation (mm)	Maximum permissible error J_{MPE} (μm)	ϕD (mm)	Order No.	Range (in)	Graduation (in)	Maximum permissible error J_{MPE} (in)	ϕD (in)
Analog					Analog				
115-201	0 - 15	0.01	± 3	$\phi 5.5$	115-253	0 - 1	0.0001	± 0.00015	$\phi 0.40$
115-215	0 - 25			$\phi 10$	115-242	1 - 2	0.001		$\phi 0.44$
115-216	25 - 50			$\phi 11$	115-243	2 - 3			$\phi 0.67$
115-217	50 - 75			$\phi 17$	Mechanical counter model				
115-218	75 - 100			$\phi 18$	295-253	0 - 1	0.0001	± 0.00015	$\phi 0.40$
Mechanical counter model									
295-215	0 - 25	0.01	± 3	$\phi 10$					

- Standard accessories: Setting standard, 1 pc. (except for measuring range 0 to 15 mm/0 to 25 mm (0 to 1 in) models)
- Spanner (200168), 1 pc. (for 115-201), Spanner (301336), 1 pc. (for models other than 115-201)

DIMENSIONS



Measurement example



Other than 115-201 115-201

Optional Accessories

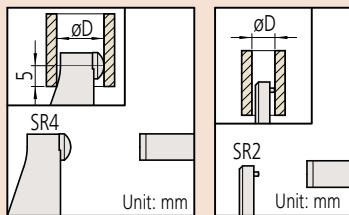
Order No.	Type	Description
05CZA662	B	Connecting cable for series 395 (1 m)
05CZA663	B	Connecting cable for series 395 (2 m)
06AFM380B	B	USB Input Tool Direct (2 m)
02AZD790B	B	Connecting cables for U-WAVE-T (160 mm)
02AZE140B	B	Connecting cables for U-WAVE-T For foot switch
264-622	IP67	U-WAVE-TM
264-623	Buzzer	U-WAVE-TM
264-626	IP67	U-WAVE-TMB
264-627	Buzzer	U-WAVE-TMB
02AZF310	IP67/ buzzer	Connecting unit for U-WAVE-TM/TMB



Dust- and Water- Protected
www.tuv.com
ID: 0000040191

Applicable models: series 395

Measurement example



Other than 115-101

115-101

Optional Accessories

Order No.	Type	Description
05CZA662	B	Connecting cable for series 395 (1 m)
05CZA663	B	Connecting cable for series 395 (2 m)
06AFM380B	B	USB Input Tool Direct (2 m)
02AZD790B	B	Connecting cables for U-WAVE-T (160 mm)
02AZE140B	B	Connecting cables for U-WAVE-T For foot switch
264-622	IP67	U-WAVE-TM
264-623	Buzzer	U-WAVE-TM
264-626	IP67	U-WAVE-TMB
264-627	Buzzer	U-WAVE-TMB
02AZF310	IP67 / buzzer	Connecting unit for U-WAVE-TM/TMB

Tube Micrometers
SERIES 395, 115, 295

- Measuring faces: Carbide. (115-101: only the spindle is carbide tipped.)
- Equipped with Ratchet Stop for constant measuring force.
- series 395: IP65 digimatic model.



395-251-30

SPECIFICATIONS

Metric					
Order No.	Range (mm)	Resolution (mm)	Maximum permissible error J_{MPE} (μ m)	$\varnothing D$ (mm)	Flatness (μ m)
Digimatic (LCD)					
395-251-30	0 - 25	0.001	± 2	$\varnothing 15$	0.3
395-252-30	25 - 50			$\varnothing 19$	
395-253-30	50 - 75			$\varnothing 20$	
395-254-30	75 - 100				

Inch / Metric					
Order No.	Range (in)	Resolution	Maximum permissible error J_{MPE} (in)	$\varnothing D$ (in)	Flatness (in)
Digimatic (LCD)					
395-351-30	0 - 1	0.00005 in / 0.001 mm	± 0.0001	$\varnothing 0.59$	0.000012
395-352-30	1 - 2			$\varnothing 0.75$	
395-353-30	2 - 3	± 0.00015	$\varnothing 0.79$		
395-354-30	3 - 4				

- Battery: SR44 (1 pc.), 938882, for initial operational checks (standard accessory)
 - Battery life: Approx. 2.4 years under normal use
 - Length standard: Electromagnetic rotary sensor
 - Standard accessories: Setting standard, 1 pc. (except for measuring range 0 to 25 mm (0 to 1 in) models), Spanner (301336), 1 pc.
- Note: For functional details, refer to page B-7.
Optional connecting cable is available only for water-proof type (Digimatic model).



115-115

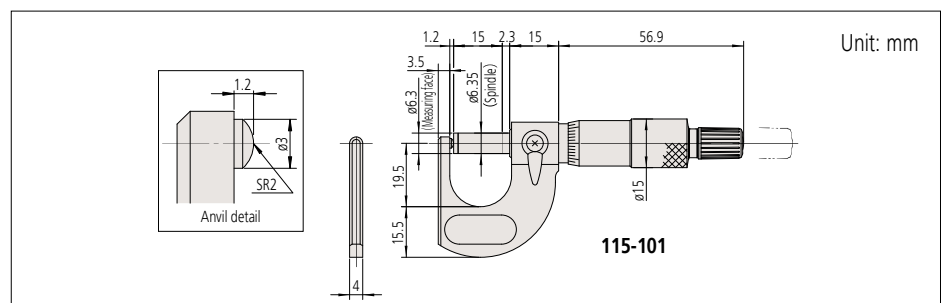
SPECIFICATIONS

Metric					
Order No.	Range (mm)	Graduation (mm)	Maximum permissible error J_{MPE} (μ m)	$\varnothing D$ (mm)	Flatness (μ m)
Analog					
115-101	0 - 15	0.01	± 3	$\varnothing 5.5$	0.6
115-115	0 - 25			$\varnothing 10$	
115-116	25 - 50			$\varnothing 11$	
115-117	50 - 75			$\varnothing 17$	
115-118	75 - 100		± 4	$\varnothing 18$	
Mechanical counter model					
295-115	0 - 25	0.01	± 3	$\varnothing 10$	0.6

Inch					
Order No.	Range (in)	Graduation (in)	Maximum permissible error J_{MPE} (in)	$\varnothing D$ (in)	Flatness (in)
Analog					
115-153	0 - 1	0.0001	± 0.00015	$\varnothing 0.40$	0.000024
Mechanical counter model					
295-153	0 - 1	0.0001	± 0.00015	$\varnothing 0.40$	0.000024

- Standard accessories: Setting standard, 1 pc. (except for measuring range 0 to 15 mm / 0 to 25 mm (0 to 1 in) models)
- Spanner (200168), 1 pc. (for 115-101), Spanner (301336), 1 pc. (for models other than 115-101)

DIMENSIONS



115-101

Unit: mm